

# FIELD REPLACEABLE UNIT DOCUMENTATION

**Tecra™**

## **8200 Series**

---

### GENERAL INFORMATION

---

**Tools Required for Proper  
Disassembly and Reassembly:**

1. Phillips Screwdriver (Size 1)
2. Flat head Screwdriver
3. Security Torx (Size 7)
4. Case Separator
5. ESD Wrist Strap
6. ESD mats
7. Tweezers

Before attempting any of the following procedures, make sure that the main battery and AC adaptor is not connected to the unit and the environment in which you are working on is protected from Electro-Static Discharge(ESD).

---

# **TOSHIBA**

**Tough Enough for Today's World.**

Download service manual and reseter printer at <http://printer1.blogspot.com>

# FIELD REPLACEABLE UNIT DOCUMENTATION

## **Tecra<sup>TM</sup>** **8200 Series**

---

### **TABLE OF CONTENTS:**

- 1. BATTERY PACK REMOVAL**
- 2. OPTIONAL PC CARD REMOVAL**
- 3. SELECT BAY REMOVAL**
- 4. DVD-ROM/CD-RW DRIVE DISASSEMBLY**
- 5. FDD DISASSEMBLY**
- 6. MEMORY MODULE REMOVAL**
- 7. WIRELESS LAN REMOVAL**
- 8. HDD REMOVAL**
- 9. KEYBOARD REMOVAL**
- 10. TOP COVER REMOVAL**
- 11. MEMBRANE SWITCH REMOVAL**
- 12. SPEAKERS AND MICROPHONE REMOVAL**
- 13. SOUND BOARD REMOVAL**
- 14. COOLING MODULE REMOVAL**
- 15. CPU REMOVAL**
- 16. MODEM BOARD REMOVAL**
- 17. RTC BATTERY REMOVAL**
- 18. SYSTEM BOARD REMOVAL**
- 19. 14.1" DISPLAY MASK REMOVAL**
- 20. FL INVERTER AND 14.1" LCD REMOVAL**

---

# **TOSHIBA**

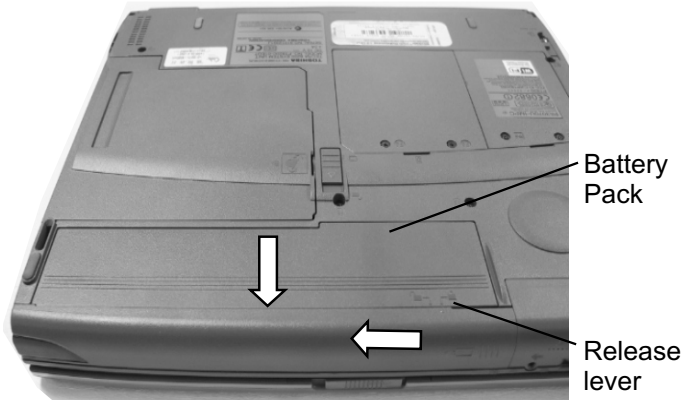
**Tough Enough for Today's World.**

Download service manual and resetter printer at <http://printer1.blogspot.com>

# FIELD REPLACEABLE UNIT DOCUMENTATION

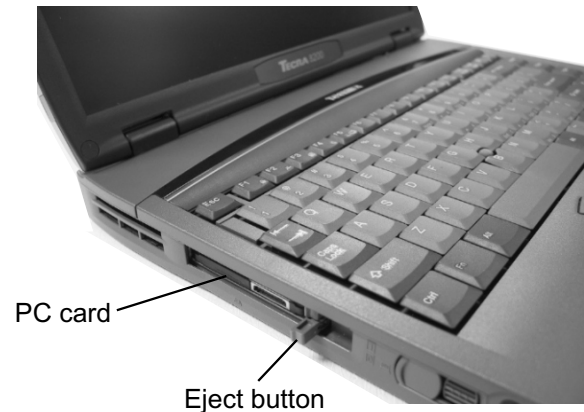
## Tecra™ 8200 Series

### BATTERY PACK REMOVAL



1. Turn the computer upside down as shown.
2. Slide the **battery release lever** in the direction of the arrow.
3. Slide the battery assembly forward and out of the battery bay.

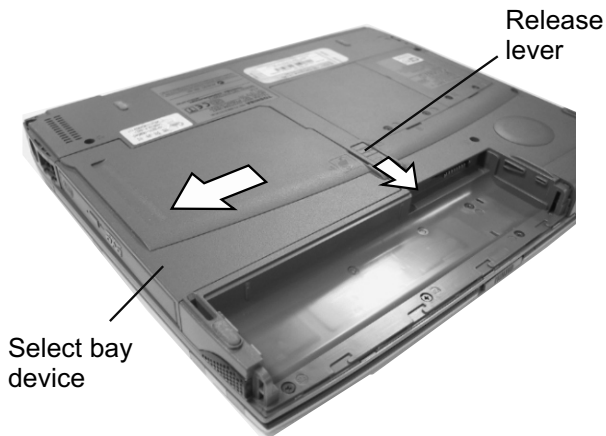
### OPTIONAL PC CARD REMOVAL



1. Pull out the **eject button** of the **PC card** to be removed.
2. Press firmly to eject the **PC card**.
3. Grasp the **PC card** and remove it.

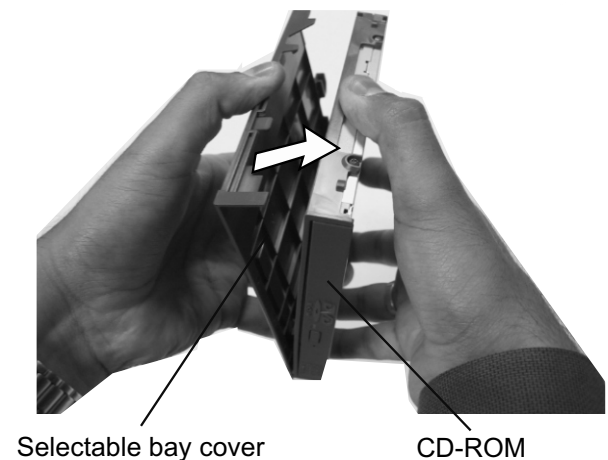
NOTE: Before removing any PCMCIA device, make sure it is "STOPPED" in the PC Card Manager.

### SELECT BAY REMOVAL



1. Turn the computer upside down.
2. Slide the **release lever** in the direction of the arrow.
3. Pull out the **select bay device** in the direction of the arrow.

### DVD-ROM/CD-RW DRIVE DISASSEMBLY



1. Remove the **selectable bay cover**.

# TOSHIBA

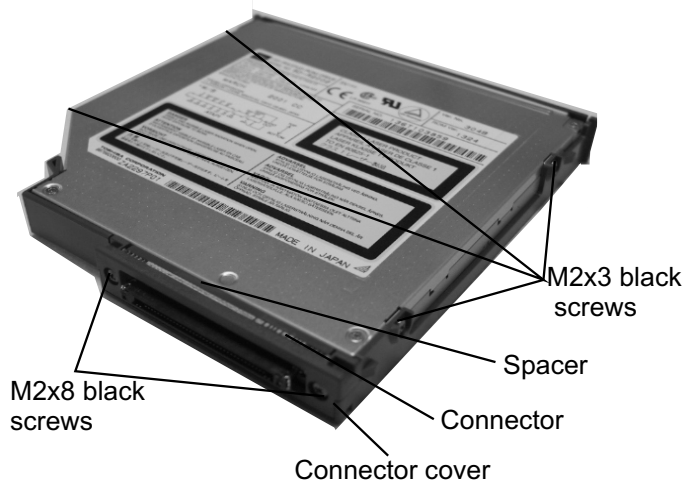
**Tough Enough for Today's World.**

Download service manual and resetter printer at <http://printer1.blogspot.com>

# FIELD REPLACEABLE UNIT DOCUMENTATION

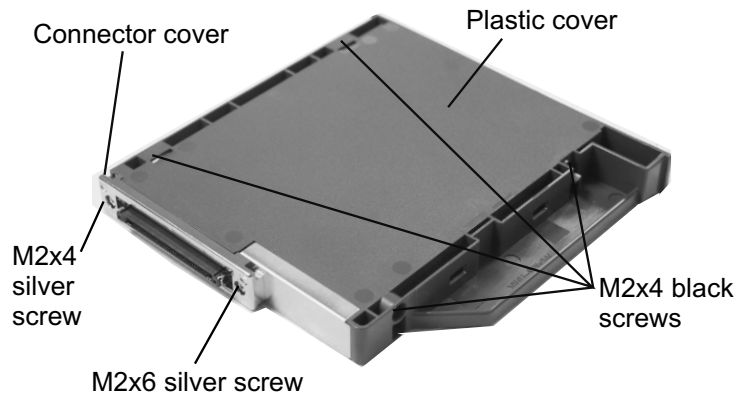
## Tecra™ 8200 Series

### DVD-ROM/CD-RW DRIVE DISASSEMBLY



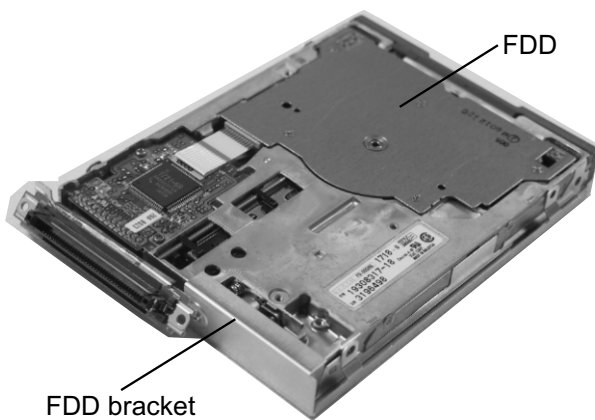
2. Remove **four M2x4 black screws**
3. Remove the **frame**.
4. Remove **two M2x8 silver screws**.
5. Remove the **spacer, connector**, and the **connector cover** from the CD/DVD ROM drive.

### FDD DISASSEMBLY

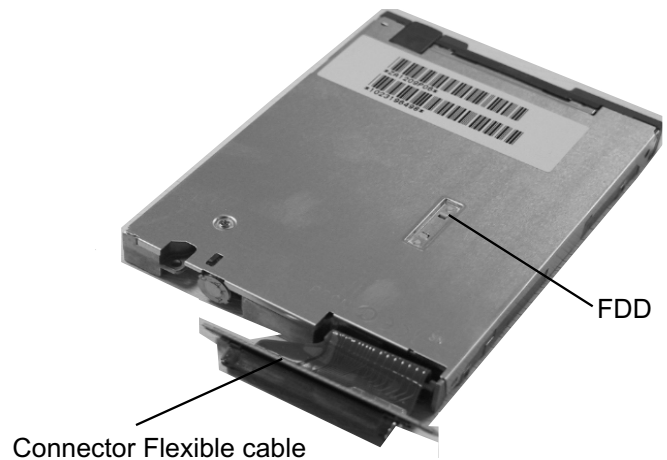


1. Remove the following six screws from the Select bay module:
  - **Four M2.5x4 black screws**
  - **One M2x6 silver screw**
  - **One M2x4 silver screw.**
2. Remove the connector cover and the plastic cover..

### FDD DISASSEMBLY



3. Remove the **FDD** from the **FDD bracket**.



4. Disconnect the **connector flexible cable** from the FDD.

**NOTE:** The brackets, flexible cable and the screws are separate parts. Please DO NOT return them to **TOSHIBA**.

# TOSHIBA

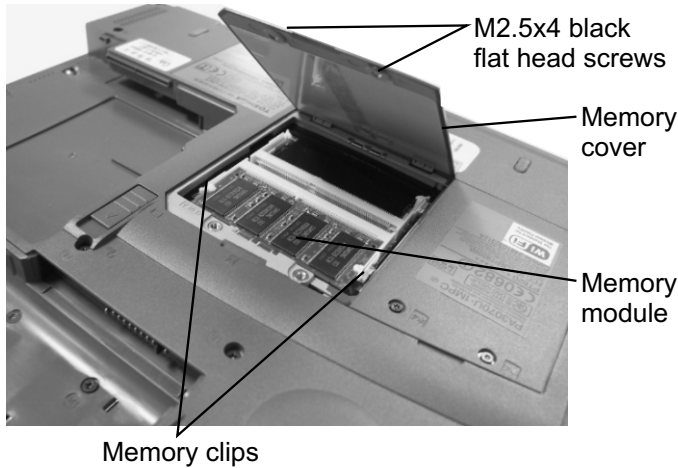
**Tough Enough for Today's World.**

Download service manual and resetter printer at <http://printer1.blogspot.com>

# FIELD REPLACEABLE UNIT DOCUMENTATION

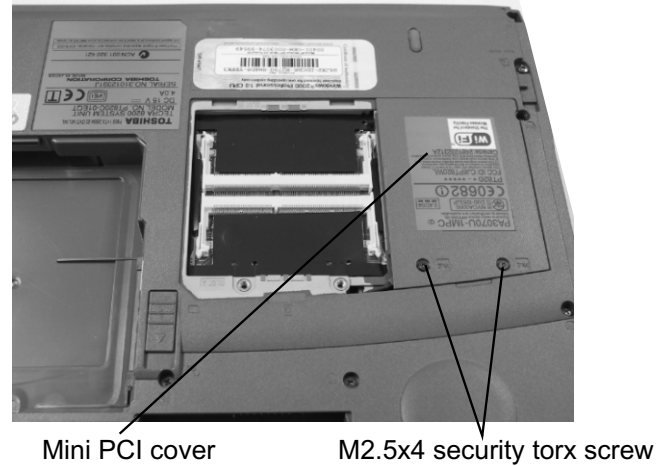
## Tecra™ 8200 Series

### MEMORY MODULE REMOVAL

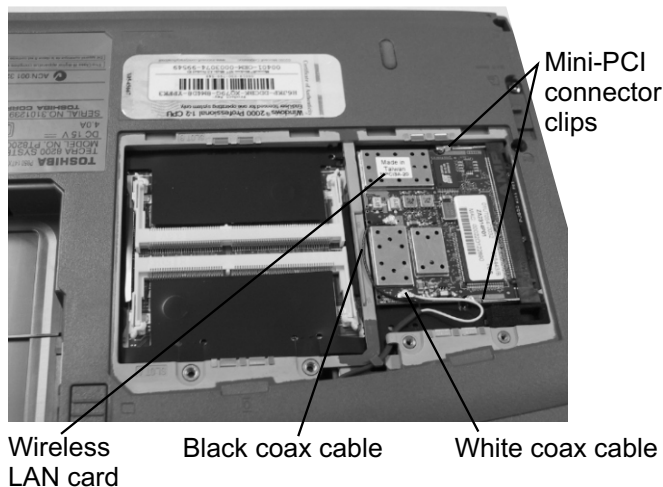


1. Turn the computer upside down.
2. Remove **two M2.5x4 black flat head screws** and remove the **memory cover**.
3. Spread the **memory clips** outward and pull the **memory module** out of the connector on a 45 degree angle.

### WIRELESS LAN REMOVAL

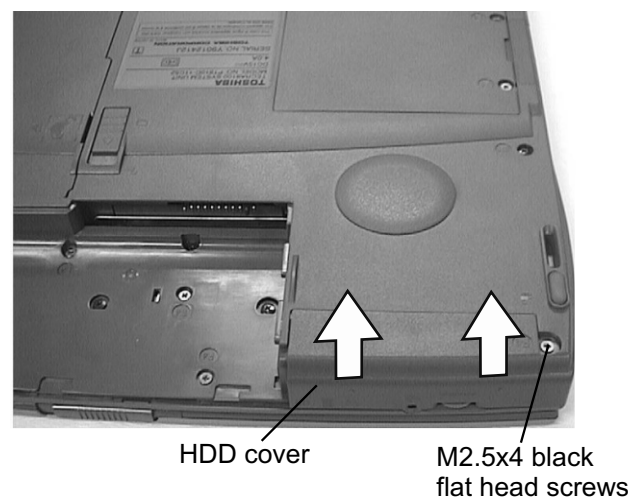


1. Turn the computer upside down.
2. Remove **two M2.5x4 security torx screws** securing the Wireless LAN cover and lift out the cover.



3. Disconnect the **Black and White coax** from PJ12 and PJ13.
4. Spread the **Mini-PCI connector clips** and pull the **Wireless LAN card** out of the connector about 45 degree angle.

### HDD REMOVAL



1. Turn the computer upside down.
2. Remove **one M2.5x4 black flat head screws** securing **HDD cover**
3. Push up the raised nubs to remove the HDD cover.

# TOSHIBA

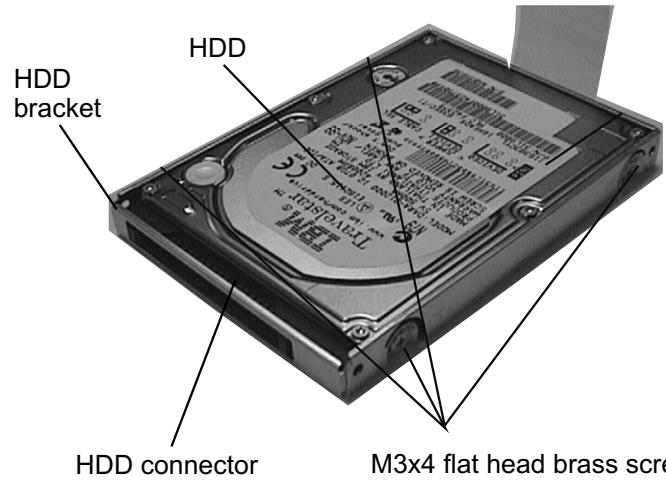
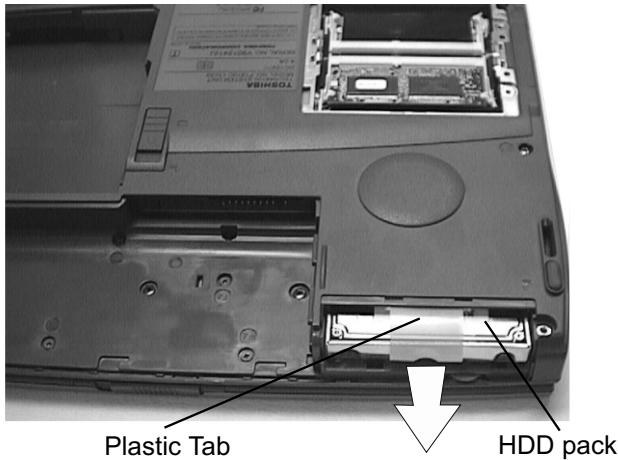
**Tough Enough for Today's World.**

Download service manual and resetter printer at <http://printer1.blogspot.com>

# FIELD REPLACEABLE UNIT DOCUMENTATION

## Tecra™ 8200 Series

### HDD REMOVAL

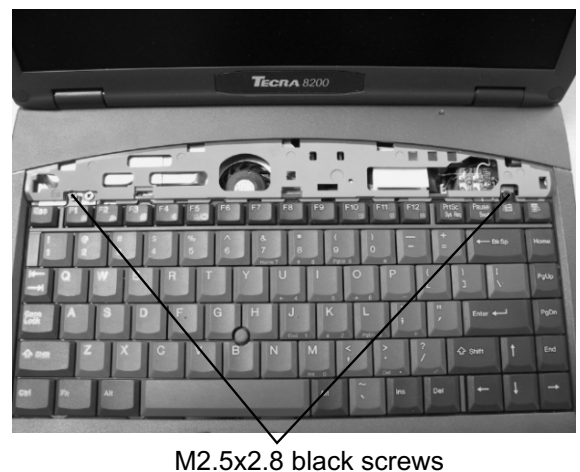
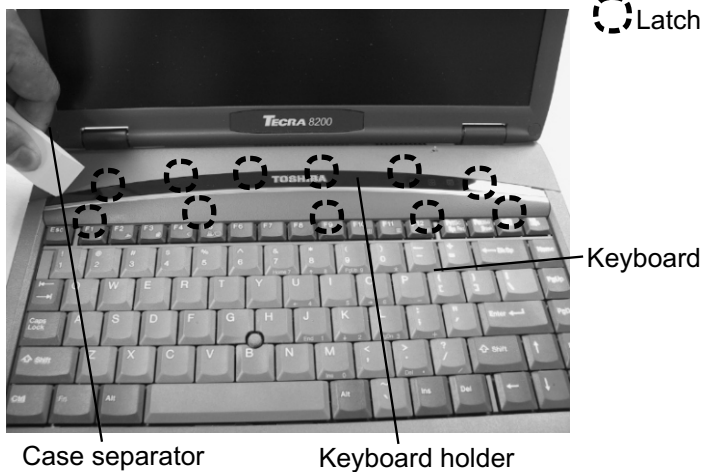


4. Unfold the **plastic tab** and pull to remove the HDD from the bay.

5. Remove **four M3x4 flat head brass screws** securing the HDD to the bracket and lift the drive out of the **bracket**.

6. Unplug the **HDD connector** from the drive.

### KEYBOARD REMOVAL



1. Open the display panel.  
2. Using the **case separator**, unlatch the **keyboard holder** at the top of the **keyboard**.

3. Remove **two M2.5x2.8 black screws** securing the keyboard.  
4. Lift out the **keyboard** and set it as shown above.  
5. Disconnect the **keyboard cable** from **PJ580** on the system board.

# TOSHIBA

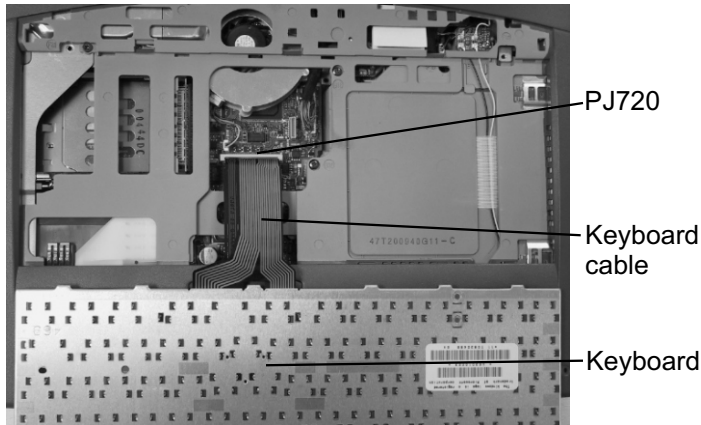
**Tough Enough for Today's World.**

Download service manual and resetter printer at <http://printer1.blogspot.com>

# FIELD REPLACEABLE UNIT DOCUMENTATION

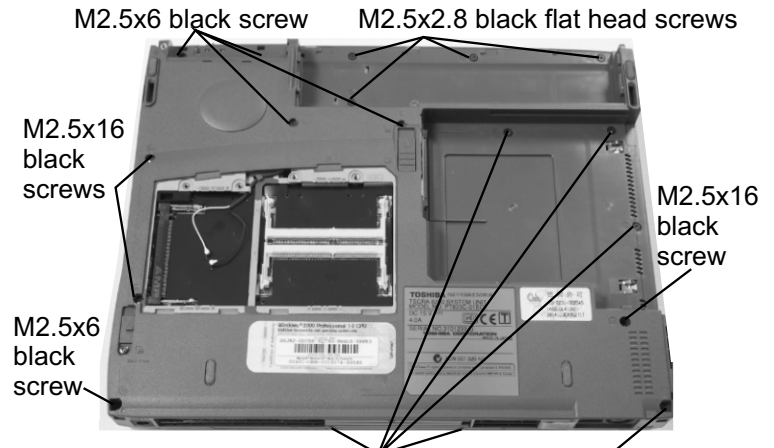
## Tecra™ 8200 Series

### KEYBOARD REMOVAL



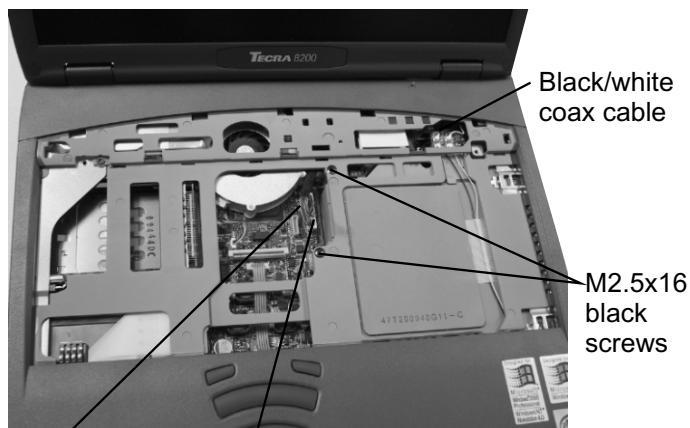
3. Lift out the **keyboard** and set it on the palmrest.
4. Disconnect the **keyboard cable** from **PJ720** and lift out the **keyboard**.

### TOP COVER REMOVAL



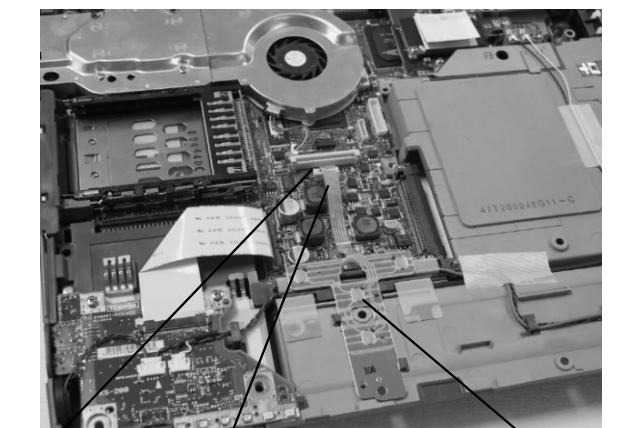
1. Turn the computer upside down and remove the following screws:
  - 4 **M2.5x2.8 black flat head screws**
  - 5 **M2.5x4 black flat head screws**
  - 6 **M2.5x6 black screws**
  - 3 **M2.5x16 black screws**

### TOP COVER REMOVAL



2. Turn the computer right side up and open the display.
3. Disconnect the **display cable** from **PJ101** on the system and the **black/white coax cable** from **PJ93/92** on the coax connector board.
4. Remove **two M2.5x16 black screws** from the keyboard area.
5. Lift out the **top cover assembly**.

### MEMBRANE SWITCH REMOVAL



1. Disconnect the **membrane switch cable** from **PJ730** on the sound board.
2. Lift out the membrane switch.

# TOSHIBA

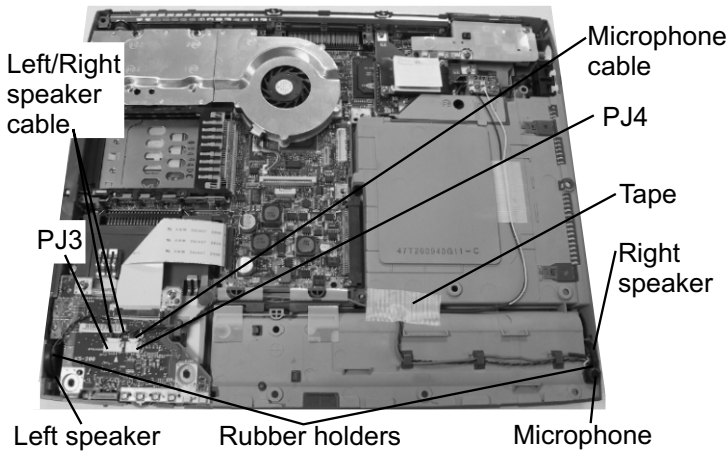
**Tough Enough for Today's World.**

Download service manual and resetter printer at <http://printer1.blogspot.com>

# FIELD REPLACEABLE UNIT DOCUMENTATION

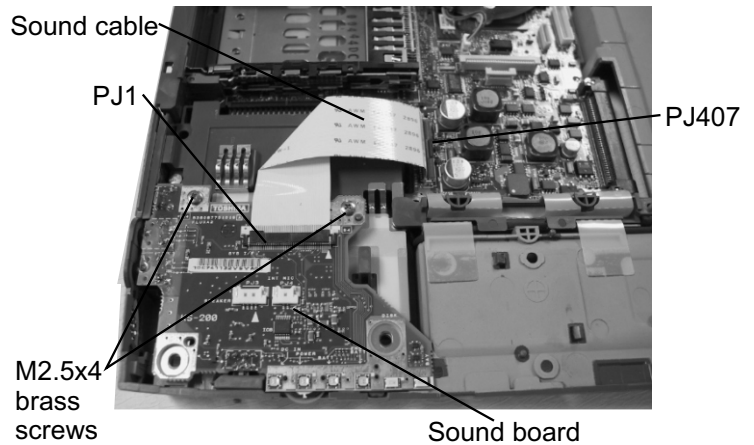
## Tecra™ 8200 Series

### SPEAKERS & MICROPHONE REMOVAL



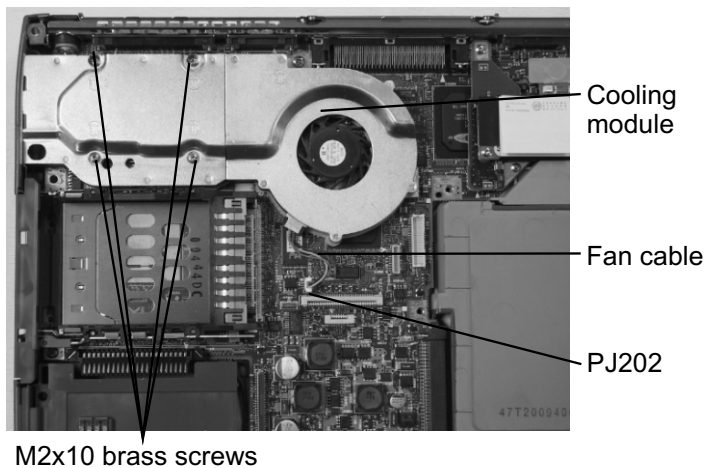
1. Lift the strip of **glass tape** securing the microphone and speaker cables.
2. Disconnect the **speaker cable** from **PJ961** and the **microphone cable** from **PJ964** on the sound board.
3. Remove the cables and lift out the speaker assemblies.

### SOUND BOARD REMOVAL



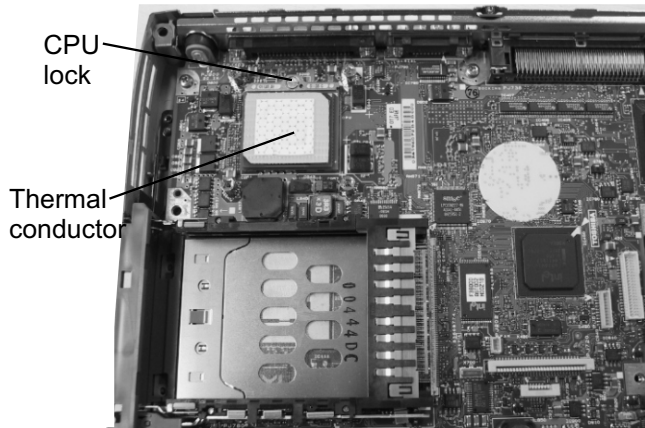
1. Disconnect the **sound cable** from **PJ407** on the system board.
2. Remove **two M2.5x4 screws** securing the sound board.
3. Lift out the **sound board assembly**.
4. Disconnect the **sound cable** from **PJ1** on the sound board.

### COOLING MODULE REMOVAL



1. Disconnect the **fan cable** from **PJ202** on the system board.
2. Remove **four M2x10 brass screws** securing the cooling module.
3. Lift out the **cooling module**.

### CPU REMOVAL



1. Peel off the **thermal conductor**.

# TOSHIBA

**Tough Enough for Today's World.**

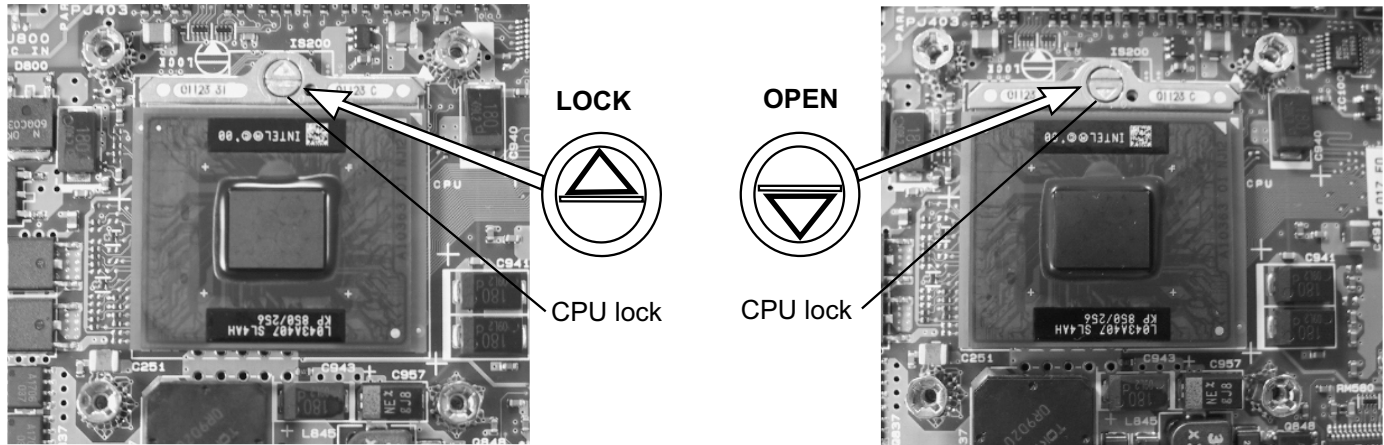
Download service manual and resetter printer at <http://printer1.blogspot.com>



# FIELD REPLACEABLE UNIT DOCUMENTATION

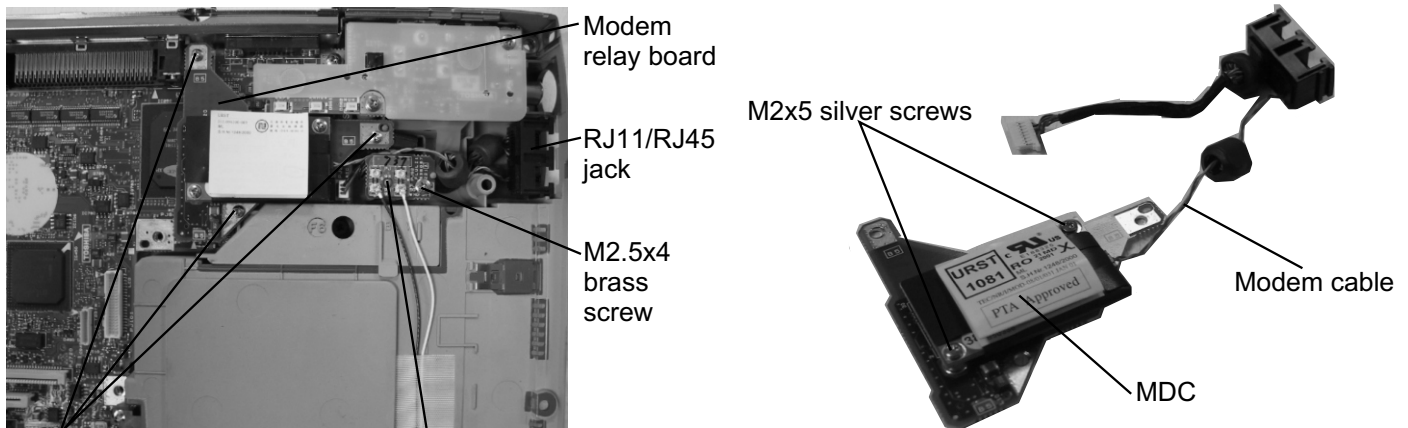
## Tecra™ 8200 Series

### CPU REMOVAL



1. Rotate the **CPU lock** 180 degrees clockwise, to the **OPEN** position, and lift the CPU out of the socket.

### MODEM BOARD REMOVAL



- M2x4 silver screws      Wireless LAN antenna relay board
1. Remove **one M2.5x4 brass screw** securing the **Wireless LAN antenna relay board** and **three M2x4 silver screws** securing the modem relay board.
  2. Lift up the left side of the modem relay board to disconnect from PJ610 on the system board and remove the **modem relay board and RJ11/RJ45 jack** upward.
  3. Disconnect the **LAN cable** from **PJ150** on the system board.

4. Remove **two M2x5 silver screws** securing the MDC (modem daughter card).
5. Lift up the back of the **MDC** to disconnect it from the modem relay board.
6. Disconnect the **modem cable** from the MDC.

# TOSHIBA

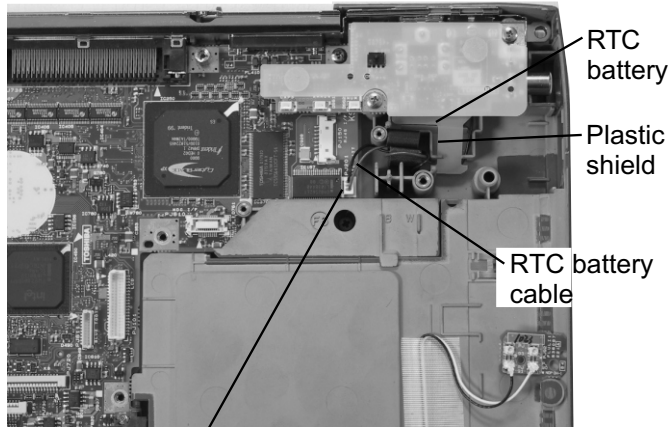
**Tough Enough for Today's World.**

Download service manual and resetter printer at <http://printer1.blogspot.com>

# FIELD REPLACEABLE UNIT DOCUMENTATION

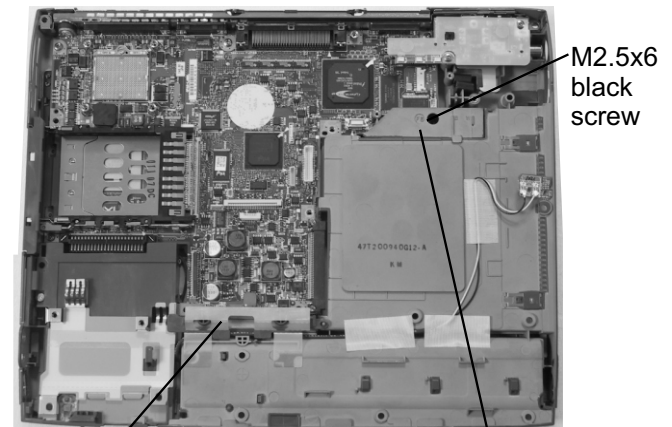
## Tecra™ 8200 Series

### RTC BATTERY REMOVAL

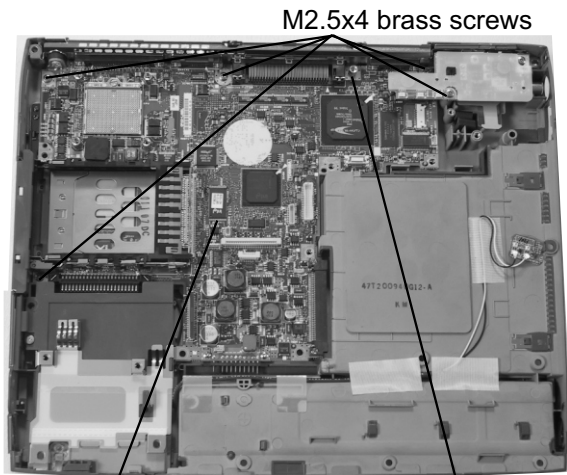


1. Disconnect the **RTC battery cable** from **PJ201** on the system board.
2. Unlatch the **plastic shield** and lift out the RTC battery.

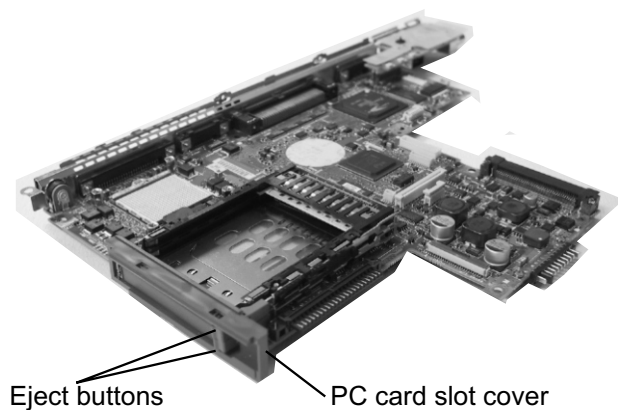
### SYSTEM BOARD REMOVAL



1. Remove **one M2.5x6 black screw** securing the select Bay cover.
2. Remove the **HDD connector cover**.



3. Remove **four M2.5x4 brass screws** and **one M2.5x4 hexagonal screw** securing the system board.
4. Lift out the **system board**.



1. Unfold the PC card eject buttons and remove the PC card slot cover.

# TOSHIBA

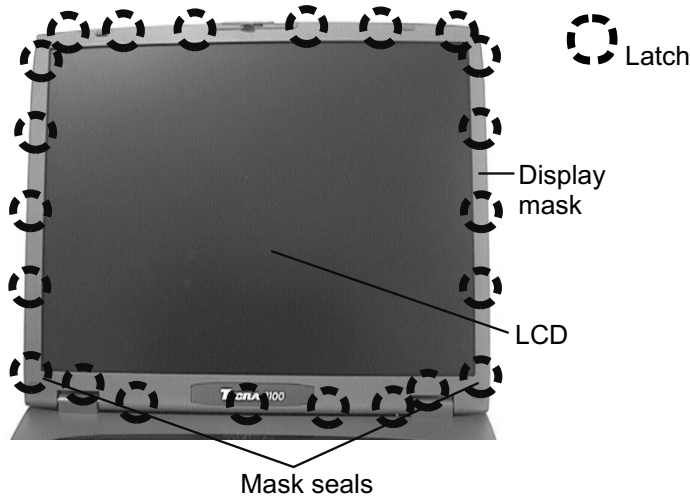
**Tough Enough for Today's World.**

Download service manual and resetter printer at <http://printer1.blogspot.com>

# FIELD REPLACEABLE UNIT DOCUMENTATION

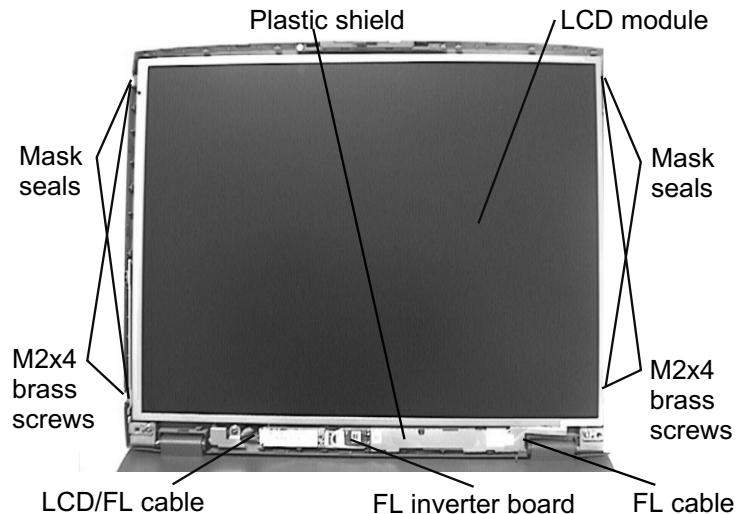
## Tecra™ 8200 Series

### 14.1" DISPLAY MASK REMOVAL



1. Remove **two mask seals** at the bottom corners of the display assembly using a pair of fine-tipped tweezers.
2. Remove **two M2.5x6 flat head brass screws** securing the display mask.
3. There are **23 latches** securing the **display mask**. Carefully insert your fingers between the mask and the LCD panel and pry open the latches starting from the **bottom seven latches**, to the **five latches on the right and left sides**, ending with the **six toplatches**.

### FL INVERTER AND 14.1" LCD REMOVAL



1. Lift the **plastic shield**.
2. Carefully lift up the **FL inverter board** and disconnect the **LCD/FL cable** from **CN1** and the **FL cable** from **CN2**.
3. Remove **four mask seals** to expose four screws securing the LCD module.
4. Remove **four M2X4 brass screws** securing the **LCD module**.
5. Carefully rotate out the top of the **LCD module** enough to access the display cable
6. Peel off the tape securing the LCD/FL cable and disconnect the cable.

# TOSHIBA

**Tough Enough for Today's World.**

Download service manual and resetter printer at <http://printer1.blogspot.com>